



Choosing food for your students shouldn't only put  
a smile on their face, but a **S.M.I.L.E.** on yours!  
For lunchtime/munchtime/anytime satisfaction,  
count on Smucker's to put  
**S**pecial **M**oments **I**nto **L**ife's **E**veryday **S**ituations.

[SmuckerAwayFromHome.com/k12](http://SmuckerAwayFromHome.com/k12)



THE J.M. SMUCKER Co

Away From Home

Let's give 'em something to smile about!



# Moments to **Smile!** About!

## Real Good, Feel Good Options for K-12 Food Service

Achieve the ideal balance  
of nutrition, convenience,  
deliciousness, **and more.**



THE J.M. SMUCKER Co

Away From Home



With Smucker's,  
we're making  
☀️ School food  
cool food!

### Pure Deliciousness

Smucker foods offer the tastes that kids and teens crave in fun forms they're happy to eat.



### Massive Brand Appeal

Students instantly recognize and naturally gravitate to the familiar **Jif®**, **Smucker's®**, and **Smucker's® Uncrustables®** brands.



Nutrition Facts		Amount per Serving	% Daily Value*
Total Fat 18g		36%	21%
Saturated Fat 3.5g		7%	14%
Trans Fat 0g		0%	0%
Cholesterol 0mg		0%	0%
Sodium 100mg		2%	7%
Total Sugar 19g		38%	38%
Calories 190			
per serving			
*Percent Daily Values are based on a diet of other people's secrets.			



## Commodity Eligibility

Divert your Raw, Shelled Peanut Commodity Dollars (110700) for Smucker's **Uncrustables** sandwiches and **Jif** peanut butter products!

## Versatile uses

Products that meet Smart Snacks guidelines<sup>1</sup> can be used across programs, dayparts and occasions, from breakfast to backpack programs to after-school snacks and even summer feeding.

## Convenient Service

Pre-packaged products make on-the-go and à la carte solutions easy, reduce allergy concerns back of house and make bento-box-style dining easier than ever!



## Special Properties Key:



Child Nutrition Labeled



Commodity Eligible



Smart Snacks Qualified<sup>1</sup>



No High Fructose Corn Syrup



Non-GMO<sup>2</sup>



<sup>1</sup>Meets 1 meat alternate and Smart Snacks when served with a fruit or vegetable. Smucker's Uncrustables sandwiches qualify as a Smart Snack when menued at breakfast or lunch on the day of or the day following menuing.

<sup>2</sup>Certified NSF Non-GMO True North by NSF International, an independent accredited organization. The NSF Non-GMO True North standard was created to ensure the integrity of non-GMO claims.



 **yes,  
please!**

**SMUCKER'S**  
**Uncrustables**

**Low-Cost/High-Quality  
Protein Options**



**Forms:**

- Sandwiches

**Uses:**

- Center of plate
- À la carte
- Smart Snacks<sup>4</sup>

**Special Properties:**







## Varieties:



NUMBER	DESCRIPTION	CAL	TOTAL FAT (g)	SAT FAT (g)	SODIUM (mg)	PACK	MEAT ALTERNATE	GRAINS PER OUNCE EQUIVALENT
5150006960	2.6 oz. Smucker's Uncrustables Peanut Butter & Grape Jelly on Wheat Bread	300	16	3.5	280	72	1	1
5150006961	2.6 oz. Smucker's Uncrustables Peanut Butter & Strawberry Jam on Wheat Bread	300	16	3.5	280	72	1	1
5150021027	5.3 oz. Smucker's Uncrustables Peanut Butter & Grape Jelly on Wheat Bread	600	33	7	530	72	2	2
5150021028	5.3 oz. Smucker's Uncrustables Peanut Butter & Strawberry Jam on Wheat Bread	600	33	7	530	72	2	2

## Sandwich:

- 9+ grams of protein per serving
- Real peanut butter and jelly
- Soft bread
- **#1 Retail Brand** of PB&J Sandwiches<sup>3</sup>

## Commodity Eligible Items for K12 Include:

- Smucker's **Uncrustables** 2.6 oz. and 5.3 oz. Peanut Butter & Grape Jelly on Wheat Bread
- Smucker's **Uncrustables** 2.6 oz. and 5.3 oz. Peanut Butter & Strawberry Jam on Wheat Bread
- Jif 1.1 oz. Creamy Peanut Butter Cups
- Jif 4 lb. Creamy Peanut Butter Can



<sup>3</sup>NPD Supply Track 12 months ending August 2022.

<sup>4</sup>Meets 1 meat alternate and Smart Snacks when served with a fruit or vegetable. Smucker's Uncrustables sandwiches qualify as a Smart Snack when menued at breakfast or lunch on the day of or the day following menuing.





# Breakfast Big Bites



Big-Time Tastes Make For Big-Time Smiles.

## Form:

- Sandwich

## Uses:

- Breakfast item
- Pairing with fruits and veggies

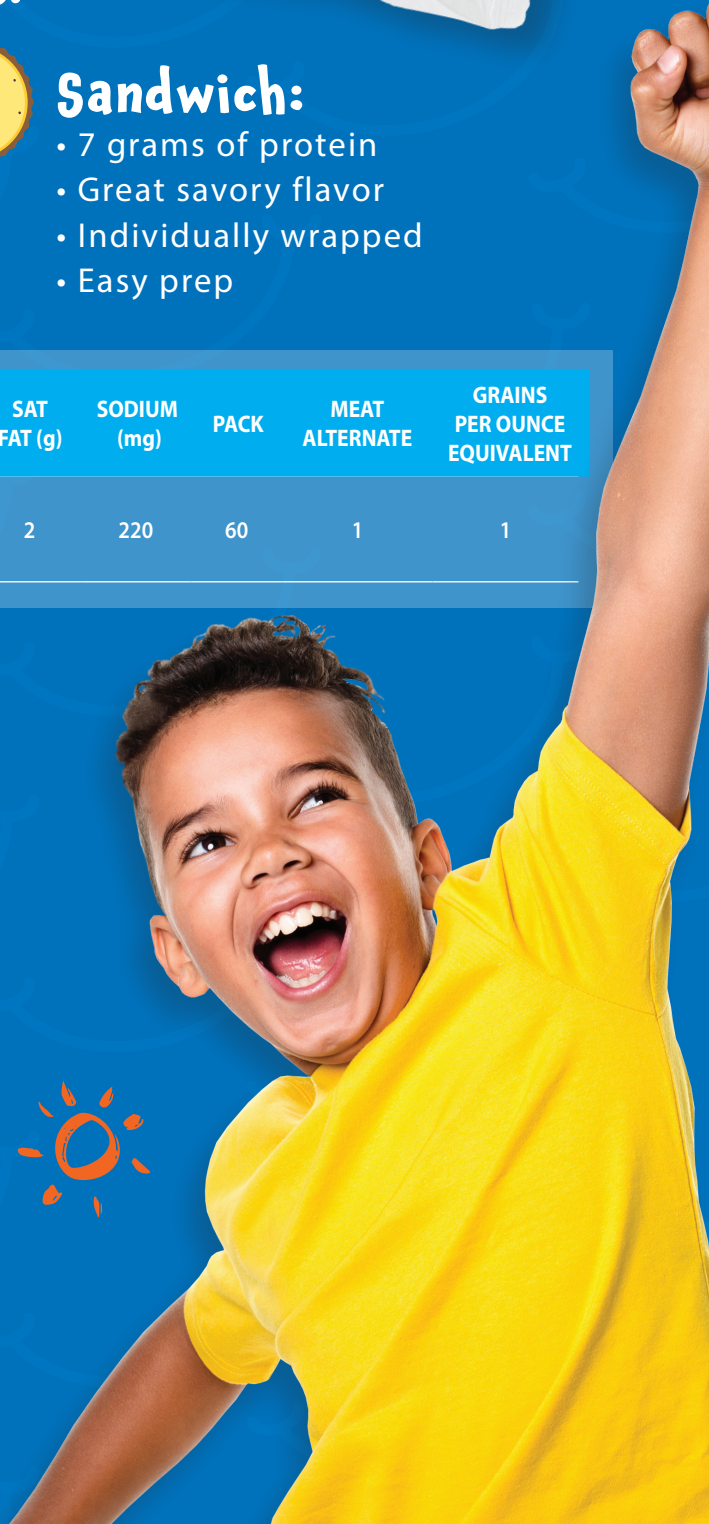


## Sandwich:

- 7 grams of protein
- Great savory flavor
- Individually wrapped
- Easy prep

## Variety:

NUMBER	DESCRIPTION	CAL	TOTAL FAT (g)	SAT FAT (g)	SODIUM (mg)	PACK	MEAT ALTERNATE	GRAINS PER OUNCE EQUIVALENT
5150089978	2.1 oz. Smucker's Uncrustables Breakfast Big Bites Turkey Sausage, Egg & Cheese	160	8	2	220	60	1	1





# Spread The Joy With America's Favorite Peanut Butter Brand<sup>5</sup>



## Form:

- Deliciously creamy peanut butter

## Uses:

- Pairing with fruits and veggies
- Smart Snacks<sup>6</sup>

## Varieties:

NUMBER	DESCRIPTION	CAL	TOTAL FAT (g)	SAT FAT (g)	SODIUM (mg)	PACK	MEAT ALTERNATE
5150092100	1.1 oz. Jif Creamy Peanut Butter Cups	180	15	3	130	120	1.00 oz
5150024331	4 lb. Jif Creamy Peanut Butter Can	190	16	3	140	6	1.00 oz.
5150008102	4.5 lb. Jif Natural Peanut Butter Sauce	190	16	3.5	160	6	1.00 oz.



## Special Properties:



## Jif® Natural Peanut Butter Sauce

### A Better Way to Bulk:

- No scooping
- Less mess
- Reduced labor
- Measurable portions

## Form:

- Delicious creamy peanut butter sauce

PERFECT FOR  
DRIZZLING,  
WHISKING &  
STIRRING UP  
CRAVINGS.



<sup>5</sup>IRI Multi-Outlet Total US 52 Weeks Ending 1/26/20.

<sup>6</sup>Meets 1 meat alternate and Smart Snacks when served with a fruit or vegetable.



# A taste of delight in every bite



## Form:

- Jam
- Syrup
- Jelly

## Uses:

- Suitable for all day parts

Simple Ways for Students  
to Customize Their Meals

LOOKING FOR  
MORE FLAVOR  
OPTIONS?  
CONSIDER  
SUGAR FREE!



## Varieties:

NUMBER	DESCRIPTION	CAL	TOTAL FAT (g)	SAT FAT (g)	SODIUM (mg)	PACK
5150002283	1.4 oz. Smucker's Breakfast Syrup	110	0	0	20	200
5150002284	2.1 oz. Smucker's Breakfast Syrup	110	0	0	35	200
5150002277	1.1 oz. Smucker's Sugar Free Breakfast Syrup	170	0	0	80	200
5150000764	1/2 oz. Smucker's Grape Jelly PC	35	0	0	5	200
5150000767	1/2 oz. Smucker's Strawberry Jam PC	35	0	0	0	200

GREAT FOR  
DIPPING AND  
POURING







Natural

MADE WITH INGREDIENTS  
FROM NATURAL SOURCES



Form:

- Jam
- Honey
- Marmalade
- Syrup

Uses:

- Pairing with bagels or toast

Special Properties:



Varieties:

NUMBER	DESCRIPTION	CAL	TOTAL FAT (g)	SAT FAT (g)	SODIUM (mg)	PACK
5150008201	1/2 oz. Smucker's Natural Strawberry Jam	35	0	0	0	200
5150008202	1/2 oz. Smucker's Natural Grape Jam	35	0	0	0	200
5150008203	1/2 oz. Smucker's Natural Red Raspberry Jam	35	0	0	0	200
5150008204	1/2 oz. Smucker's Natural Orange Marmalade	35	0	0	0	200
5150010454	1/2 oz. Smucker's Natural Blackberry Jam	35	0	0	0	200
5150000763	1/2 oz. Smucker's Natural Honey	45	0	0	0	200
5150060504	1 oz. Smucker's Natural Breakfast Syrup	80	0	0	15	200





Make 'em say   
hip, hip,  
hooray!

